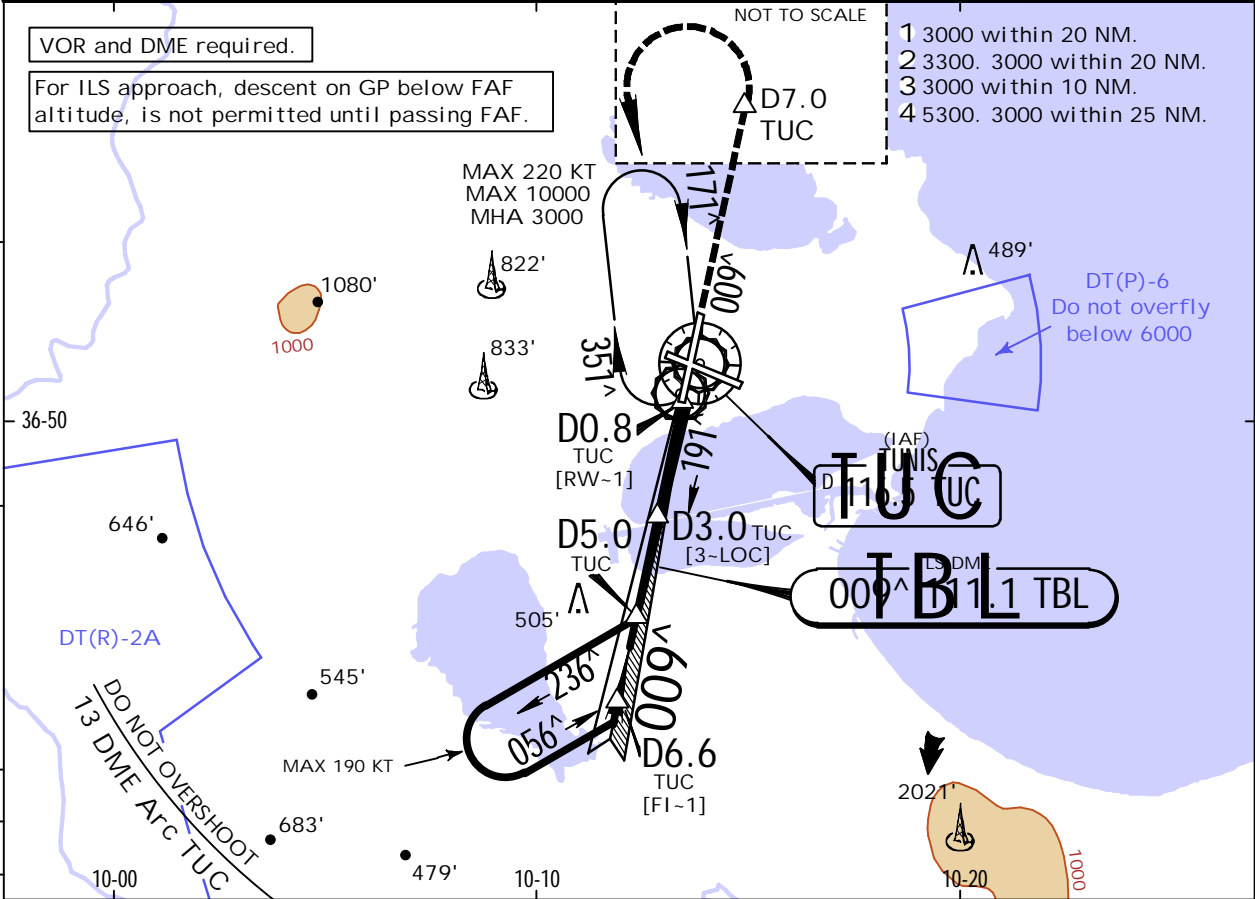
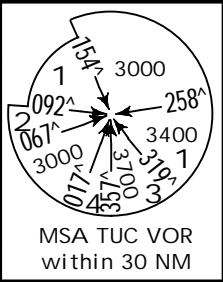


DTTA/TUN
CARTHAGE

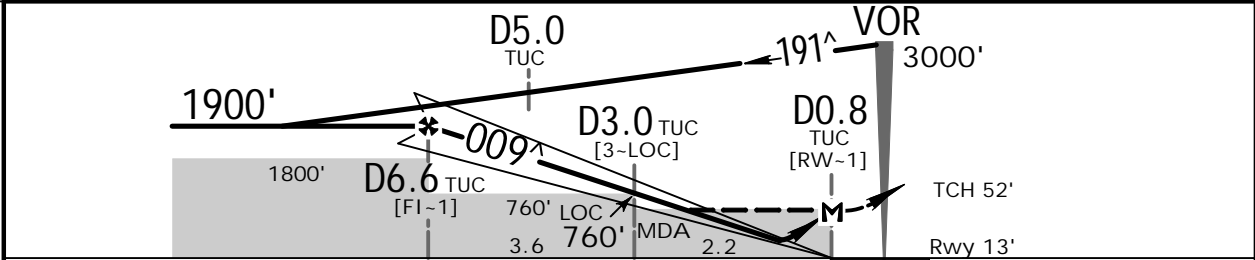
JEPPESEN
24 DEC 21
.Eff.30.Dec. (11-2)

TUNIS, TUNISIA
ILS Y or LOC Y Rwy 01

D-ATIS 118.675	TUNIS Approach 121.2	TUNIS Tower 118.1	Ground 121.9
LOC TBL 111.1	Final Apch Crs 009^	D6.6 TUC 1900' (1887')	ILS DA(H) Refer to Minimums Apt Elev 21' Rwy 13'
MISSED APCH: Climb STRAIGHT AHEAD to D7.0 TUC, then turn LEFT to join TUC VOR at 3000'. MAX 220 KT.			
Alt Set: hPa	Rwy Elev: 0 hPa	Trans level: By ATC	Trans alt: 6000'



LOC (GS out)	TBL DME	6.0	5.0	4.0	3.0	2.0	1.0
	ALTITUDE	1910'	1590'	1280'	960'	640'	330'
	TUC DME	6.0	5.0	4.0	3.0	2.0	
	ALTITUDE	1710'	1400'	1080'	760'	450'	



Gnd speed-Kts	70	90	100	120	140	160				
ILS GS or LOC Descent Angle	3.00^	372	478	531	637	743	849		PAPI-L	220 KT MAX
MAP at D0.8 TUC										D7.0 TUC

JAR-OPS.		STRAIGHT-IN LANDING		CIRCLE-TO-LAND	
ILS		LOC (GS out)			
DA(H) A: 223' (210') C: 243' (230') B: 233' (220') D: 253' (240')		with D3.0 MDA(H) 380' (367')		w/o D3.0 MDA(H) 760' (747')	
A	R1000m	R1500m	R1500m	Max Kts	MDA(H)
B		R1500m	R1500m	100	550' (529') 1 V1500m
C		R1800m	R2000m	135	730' (709') 1 V1600m
D		R2000m	R2000m	180	1230' (1209') V2400m
				205	1230' (1209') V3600m

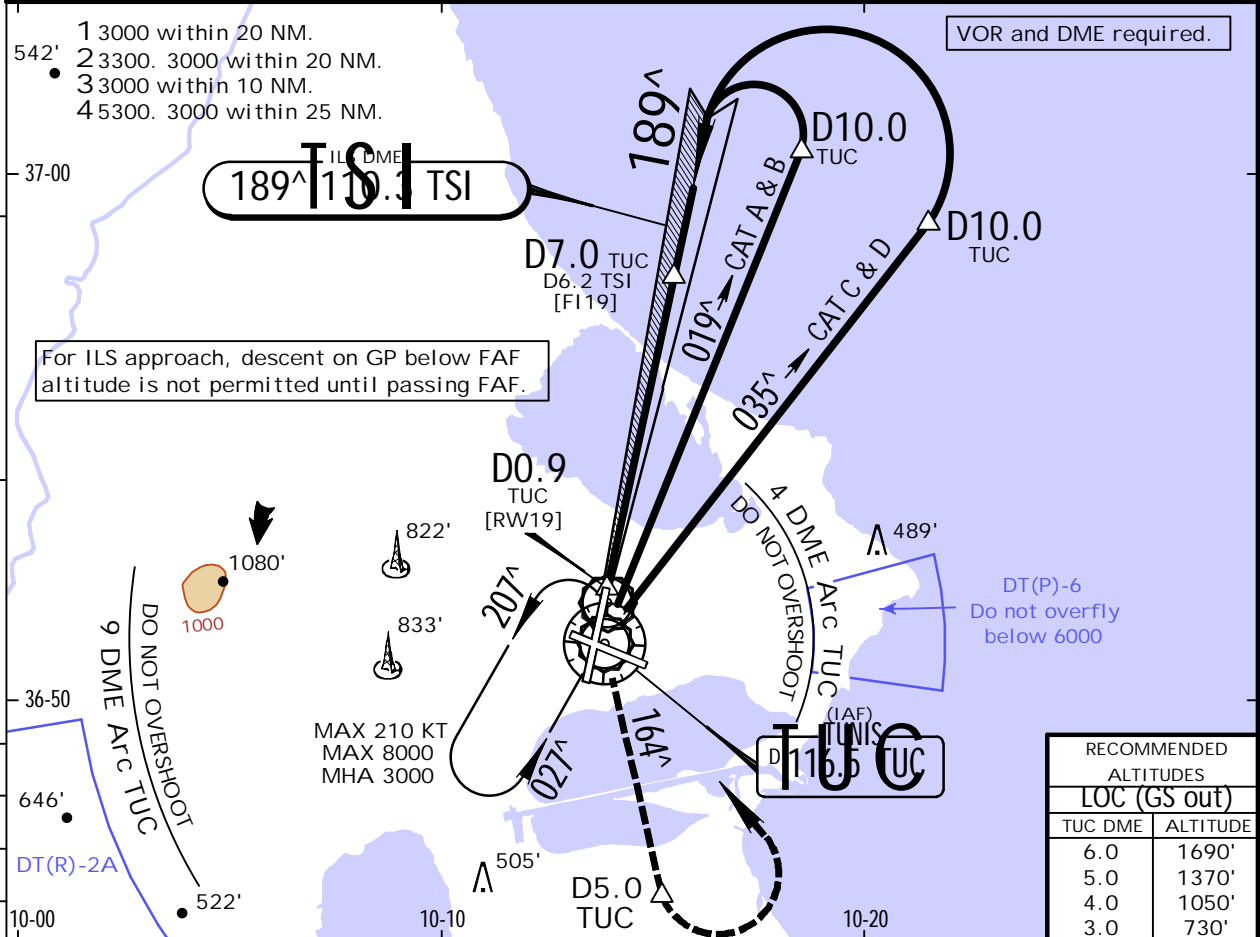
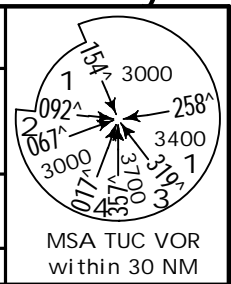
1 or higher straight-in minimums.

DTTA/TUN
CARTHAGE

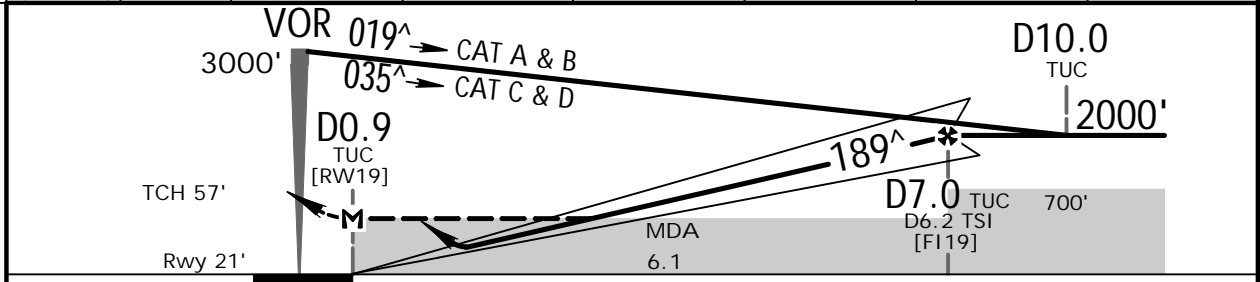
JEPPESEN
24 DEC 21
.Eff. 30. Dec. (11-5)

TUNIS, TUNISIA
ILS Y or LOC Y Rwy 19

D-ATIS 118.675	TUNIS Approach 121.2	TUNIS Tower 118.1	Ground 121.9
LOC TSI 110.3	Final Apch Crs 189 [^]	D7.0 TUC 2000' (1979')	ILS DA(H) Refer to Minimums
Apt Elev 21' Rwy 21'			
MISSED APCH: As soon as possible climbing turn LEFT on R-164 to D5.0 TUC, then turn LEFT (MAX 190 KT) to join VOR at 3000'. Do not turn before MAP.			
Alt Set: hPa	Rwy Elev: 1 hPa	Trans level: By ATC	Trans alt: 6000'



LOC (GS out)	TSI DME ALTITUDE	1.0	2.0	3.0	4.0	5.0	6.0
		340'	650'	970'	1290'	1600'	1920'



Gnd speed-Kts	70	90	100	120	140	160	HIALS	As soon as possible	D5.0 TUC on 116.5 R-164
ILS GS or LOC Descent Angle	3.00 [^]	372	478	531	637	743	849	PAPI	
MAP at D0.9 TUC									

JAR-OPS		STRAIGHT-IN LANDING		LOC (GS out)		CIRCLE-TO-LAND	
DA(H) A: 281' (260') B: 291' (270')		C: 301' (280') D: 311' (290')		MDA(H) 420' (399')			
FULL		ALS out		ALS out			
A	R650m	R1200m	R900m	R1500m	Max Kts 100	550' (529')	V1500m
B					135	730' (709')	V1600m
C			R1000m	R1800m	180	1230' (1209')	V2400m
D			R1400m	R2000m	205	1230' (1209')	V3600m